

Installation

StowAway

Electric Folding Mount

What is in the box

Main Body
(Contains the
mount motor)



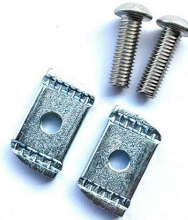
Wiring Harness
(Suitable for
power source
input of
12-24V DC)



Mounting Hardware

Kit includes the following Stainless Steel fixing hardware:

- 2 x M8 x 30 Bolts to fit the mounting brackets to the Roof bar or platform.
- 2 x M8 Channel Nuts for fitting to a roof bar.
- 1 x Split Conduit for antenna cable protection around knuckle.



1 — Install your External Antenna or Safety Flag to the Main Body

Note: Stowaway accepts all antennas with a base up to 16mm.

- 1.1 Remove the 4 top fasteners (8mm socket) that attach the top of the main body to access the internal space.



- 1.2 Remove the housing, and set aside with fasteners to be attached later.



- 1.3 Route the antenna cable as per the image below. Wrap provided cable protector around the antenna cable.



- 1.4 Fix the top of the housing back onto the main body with 4 x fasteners removed above.

Make sure that the power and antenna cables exit the housing through the right hand side cut-out as shown in the image (right).



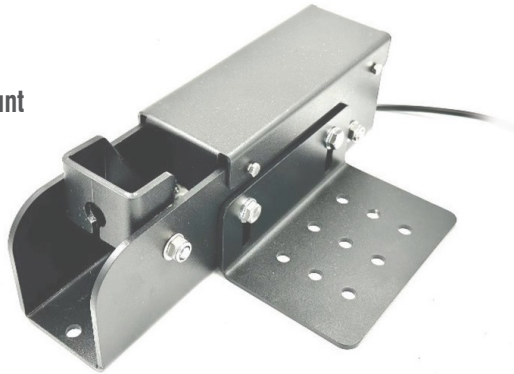
2 — Mount the Stowaway Main Body to your vehicle

The Stowaway can be mounted directly to the Roof Platform or cross bar using the supplied Hardware.

There is an optional mounting bracket to give you a number of mounting options to fit to your Roof Rack/Rail or to a Platform/Roof Tray.

- 2.1 Fix the bracket to the Stowaway main housing using the supplied 2 x M8 x 20 Bolts to fix the mounting bracket to the side of the stowaway main body.
- 2.2 Fit the StowAway main body to the vehicle using the following fasteners:
 - a. **Roof Rack/Rail Mount** – Insert the 2 x M8 channel nuts in the roof rack/rail and affix the bracket with the 2 x M8 Nylock Nuts, Washers and Split Washers.
 - b. **Platform/Roof Tray** – Affix the bracket with the 2 x M8 Nylock Nuts, Washers and Split Washers.

**Bracket (optional) -
Roof Rack/Rail Mount**



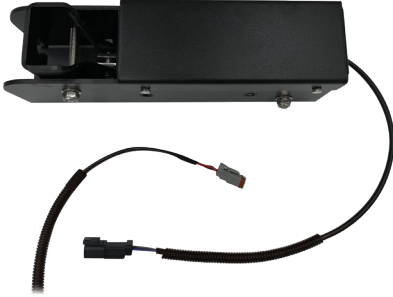
3 — Install the electrical Harness

As with all electrical work on a vehicle, this part of the installation should only be undertaken by a suitably qualified person.

Power Source – 12-24V DC

Amperage required to operate motor via switch – 3A

3.1 Connect the wiring harness to the housing via the Deutsch connector.



3.2 Run the cable from the housing to your preferred switch location – the switch is a standard single blank switch cutout. (44 x 23mm)



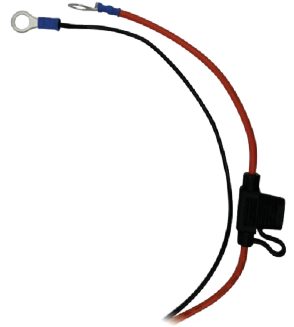
3.3 Connect to vehicle power supply.

RED WIRE – Positive (Accessory or ignition feed)

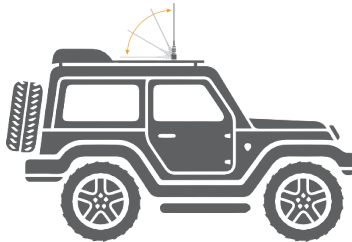
BLACK WIRE – Vehicle Ground

Notes: The switch is wired to reverse the current when the position changes, and this results in the fixed antenna being raised or lowered. It can be used on 12V or 24V vehicles, the actuator will simply run faster with a 24V power source.

The switch requires a cutout of 44 x 23mm.



4 — Test



Enquiries

1300 000 734

enquiry@rfi.com.au

www.rfi.com.au



Scan QR code
for more information