

# Expansion Multicoupler

60-960MHz

Broadband 8-Way Expansion Multicoupler

RX0696-3008-31



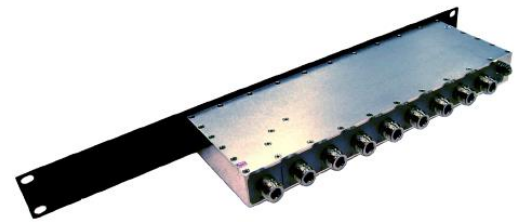
The RX0696-3008-31 is a broadband expansion multicoupler primarily used to expand the port capability of any of the RFI banded receiver multicouplers. This expansion multicoupler is a passive 1 in 8-way out device mounted onto a 1RU 19" rack front panel. Expansion configurations are detailed in our Receiver Multicoupler Application Note.

## Features:

- Facilitates port expansion of receiver multicouplers
- Compatible for use with RFI VHF, UHF and 7/8/900MHz receiver multicouplers
- Compatible with analogue and digital technologies
- Easy retro-fittable expansion
- 1RU 19" rack mountable
- BNC Female termination model available



FRONT VIEW



REAR VIEW

## Technical Specifications

Model Number	RX0696-3008-31	
Frequency MHz	60-960	
Insertion Loss (typical) dB - RF Outputs 1-8	10.5 ± 0.5	
Impedance Ohms	50	
Input Return Loss (minimum) dB	14	
Output Return Loss (minimum) dB	14	
Port to Port Isolation (minimum) dB	20	
Input Level (maximum) dBm	+24	
Termination Connectors	N(f)	
Operational Temperature Range C / F	-30° to +60° / -22° to +140°	
Mounting Option	2RU 19" Rack mount front panel	
Earthing	M6 earthing stud	
Net Dimensions mm / in	H	44 / 1.75
	W	483 / 19
	D	117 / 4.6
Net Weight Kg / lb	1.3 / 2.86	
Compliance	RoHS	

## Ordering Information

Model Number	Description
RX0696-3008-31	Expansion Multicoupler, 60-960MHz, 8-way, N (F)