

LTE Log Periodic Antenna (Enclosed)

698-4000MHZ

LPDA7040-11-0.3NF

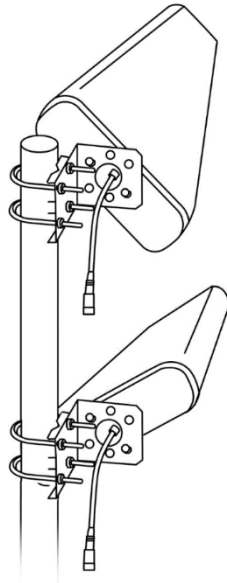
The LPDA7040-11-0.3NF is a high-performance wide band log periodic antenna designed to operate in the LTE bands from 698 to 4000 MHz. This wideband design eliminates the need to purchase different antennas for each frequency. This simplifies installations since the same antenna can be used for a wide array of wireless applications where wide coverage is desired.

The brass & aluminum internal components of this antenna are enclosed within a UV-stable white ABS radome for all-weather operation and is supplied with a tilt and swivel mast mount kit.

Two antennas can be install to form a MIMO solution (see image below).

Features:

- Broad operating frequency range
- Compact design
- IP65
- PIM -153dBc



Electrical Specifications

Model Number	LPDA7040-11-0.3NF		
Frequency MHz	698-960	1710-2700	3300-4000
Gain dBi	9.5	11.0	11.5
VSWR	<math><2.0:1</math>	<math><1.5:1</math>	<math><1.8:1</math>
Polarisation	Vertical		
Front to Back Ratio dB	>15		
Horizontal Beamwidth	90°	75°	54°
Vertical Beamwidth	66°	58°	42°
Impedance Ω	50		
Power W	50		
PIM (3 rd Order, 2 x 20W)	<math><-153\text{ dBc}</math>		
Lighting Protection	DC Grounded		

Mechanical Specifications

Model Number	LPDA7040-11-0.3NF
Radome Material	UV Stable ABS
Dimensions mm	440 x 205 x 60
Weight kg	1.1
Ingress Rating	IP65
Operating Temperature °C	-40 to +65
Cable / Connector	0.3m RG141 / N Type Female
Mounting	Ø 38 - 52mm pole